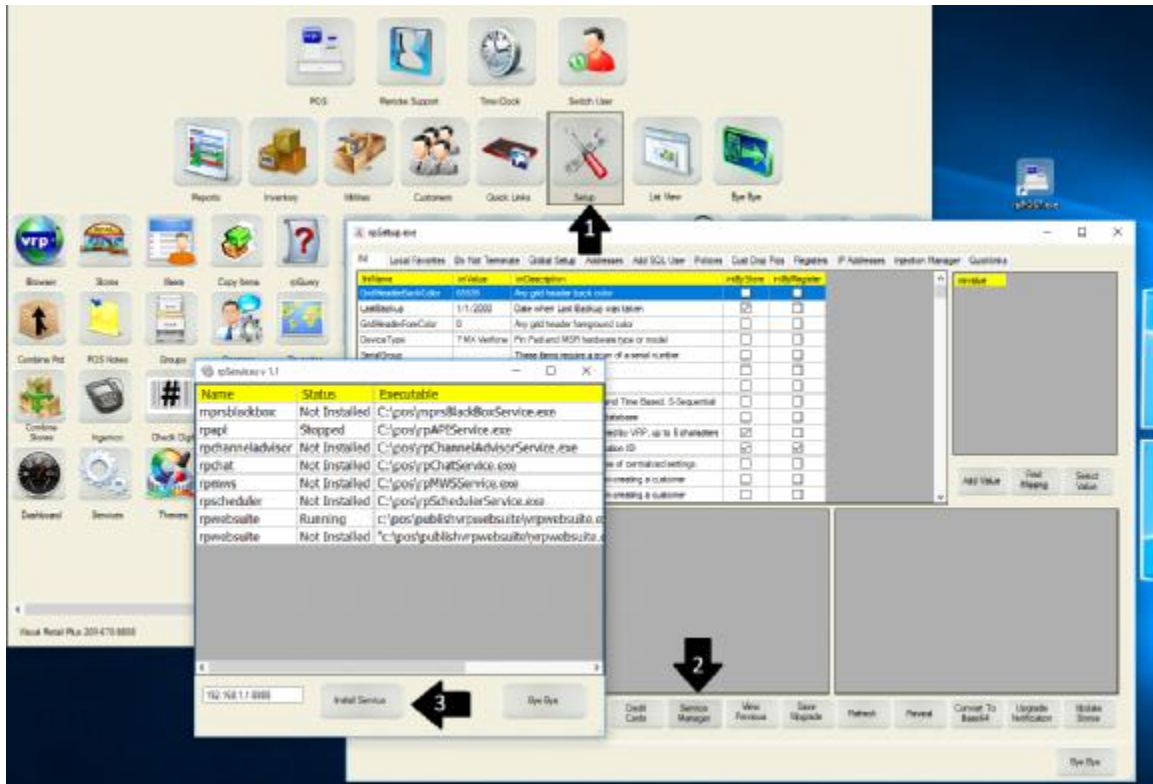


Installing VRP Services

About: This article explains how to install Several VRP services and how to get the most out of them

Installing the services:

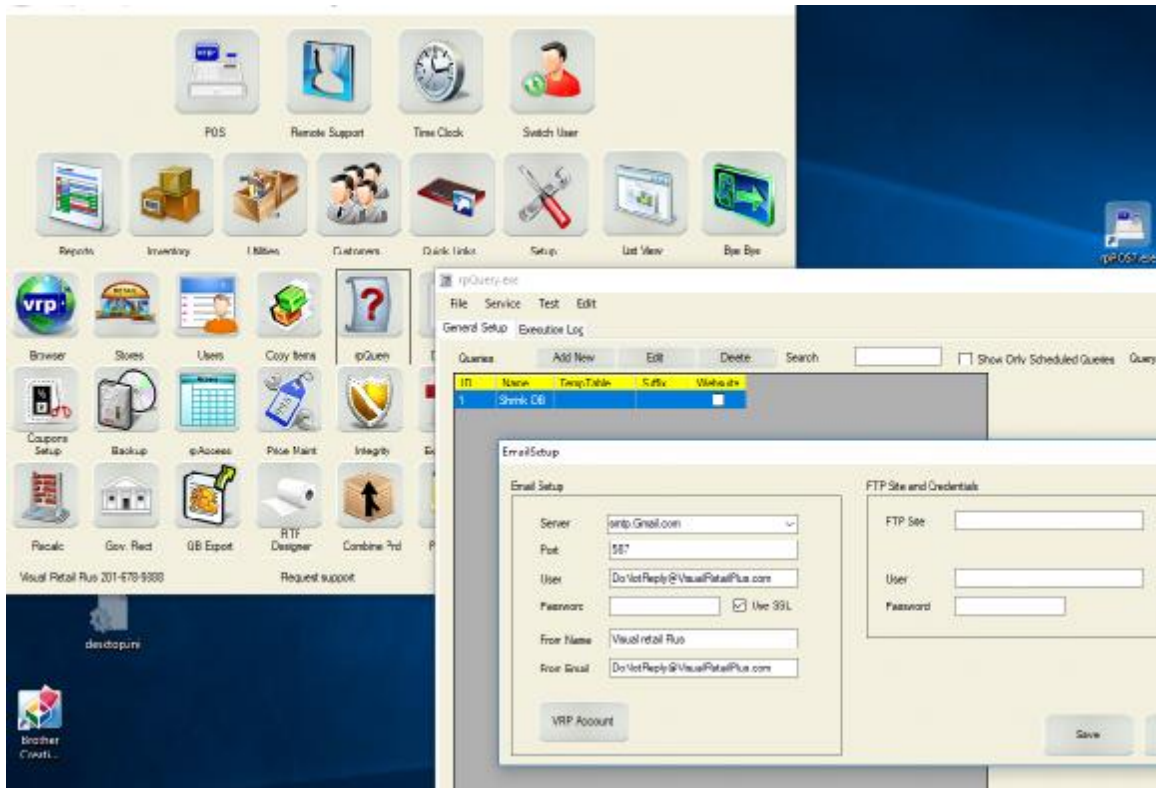
Basic Service installation is only a few steps, but some services have special requirements.



1. Click on SETUP
2. Click SERVICE MANAGER
3. Highlight the Service, then click INSTALL SERVICE

RPScheduler Service.

The Scheduler service is a powerful tool when used in conjunction with the RPQuery Program, but enabling it to email unlocks its full potential.



Click on UTILITIES, then on RPQUERY

Click on FILE in the upper left hand corner then on EMAIL SETUP

Insert your:

Mail Server, Port, Username, Password, From Name and Email. Then Save.

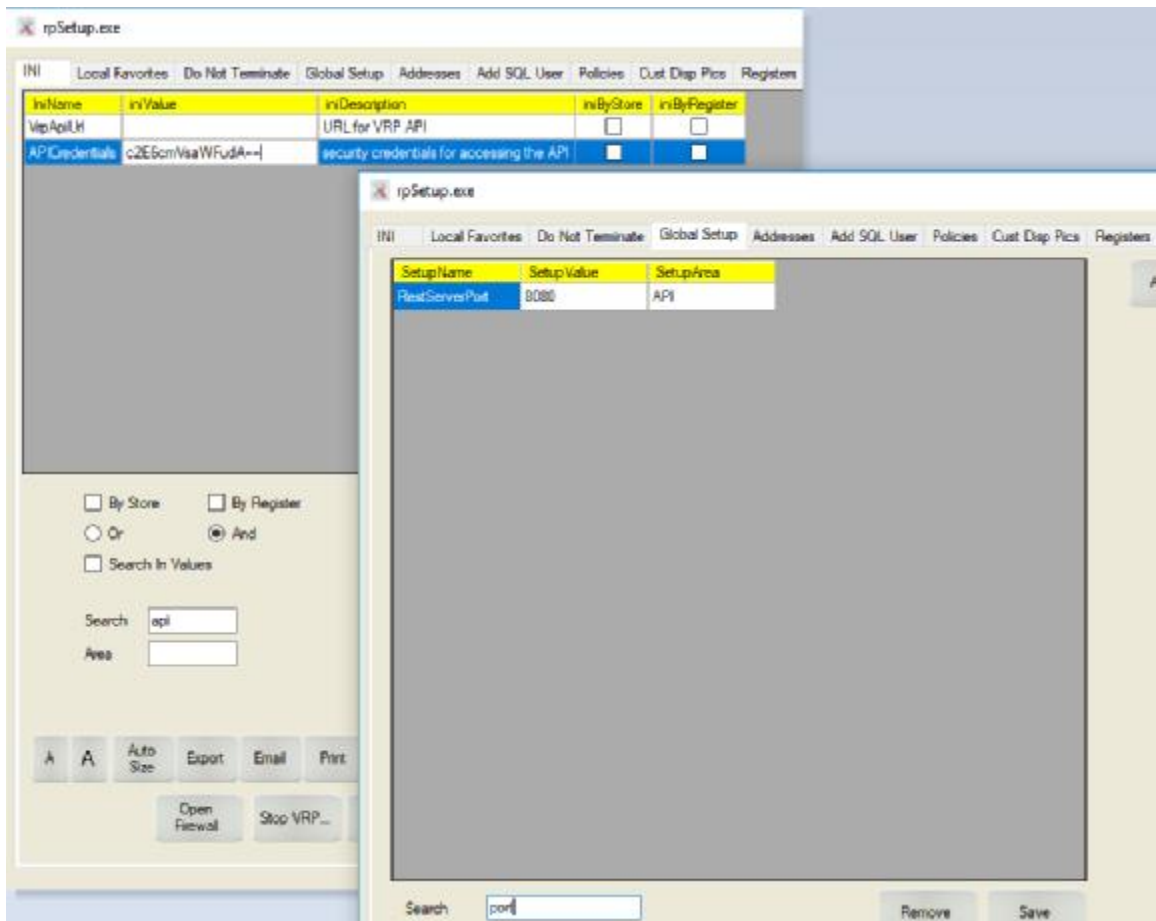
RPWebSuite Service

If you subscribe to VRP's Website Service, you can install it yourself at the services window, but need to download and run the following file before you do:

<http://www.posvrp.com/downloads/Websuite/PublishVRPWebSuite.exe>

RPAPI Service

The API service installs in a similar manner, but there are 3 settings in the Setup and Global Setup that need to be addressed at the satellite locations that want to access it.



VrpApiUrl needs the IP or FQDN of the Hub server

APICredentials are the username:password of the SQL Server at the HUB, usually converted to Base64 for broadcast.

RestServerPort is the port the API runs on.