

Setting Up Alternate Backup Server

1. In the computer that you want to setup as a backup server, obtain the IPv4 address of the computer by entering **ipconfig** in the command prompt.

```
C:\Users\abhas>ipconfig
```

2. Make sure you have the designated backup server linked to the regular working server. See Microsoft Documentation for Linking Servers.

3. Click Start and enter **c:\pos\rpos7** and hit <Enter> to open the VRP application.

4. Login to VRP as Admin.

rpPOS7.exe 2/1/2021 3:01:54 PM

File Utilities


Framework: 4.8.03752
Ver Date: 2/1/2021
Satellite
DB: 127.0.0.1\sqlexpress\VRP1
Store: 01
Reg: AP
Public IP:69.120.206.213
Local IP:192.168.3.125


VRP# Release 7.01

vrp
visual retail plus

User

Password

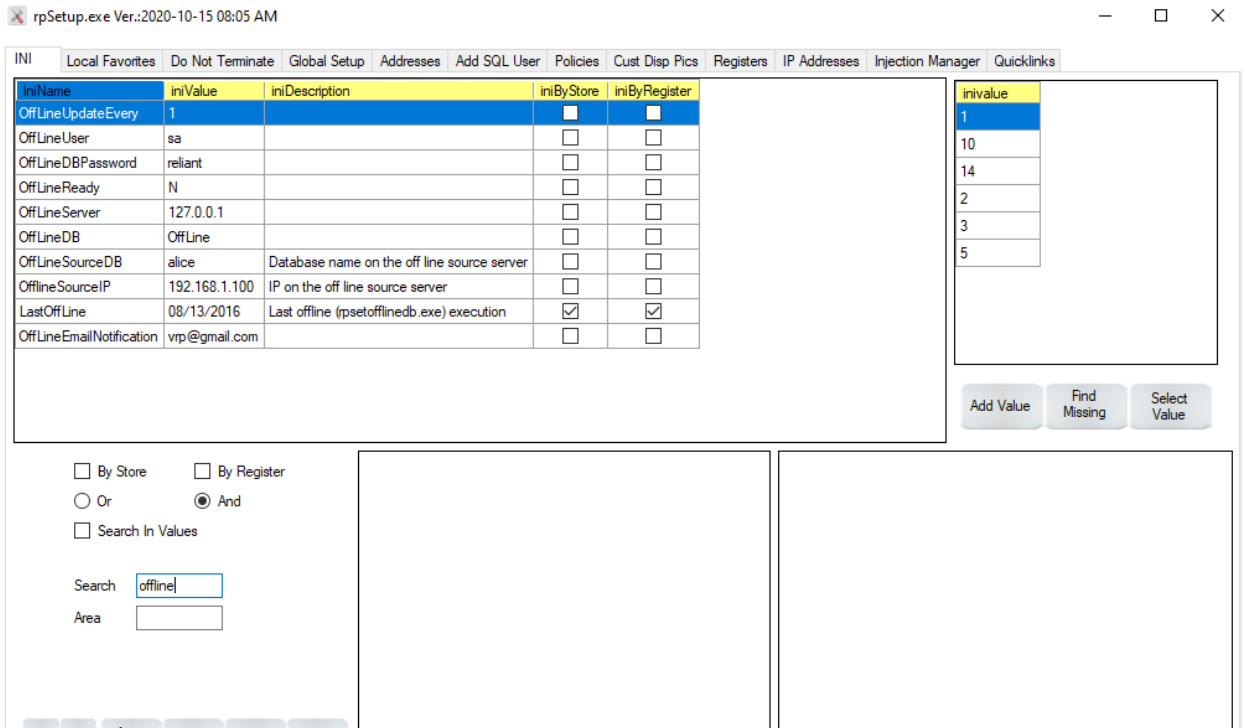
 OK

 Bye Bye

5. Navigate to Setup Module.

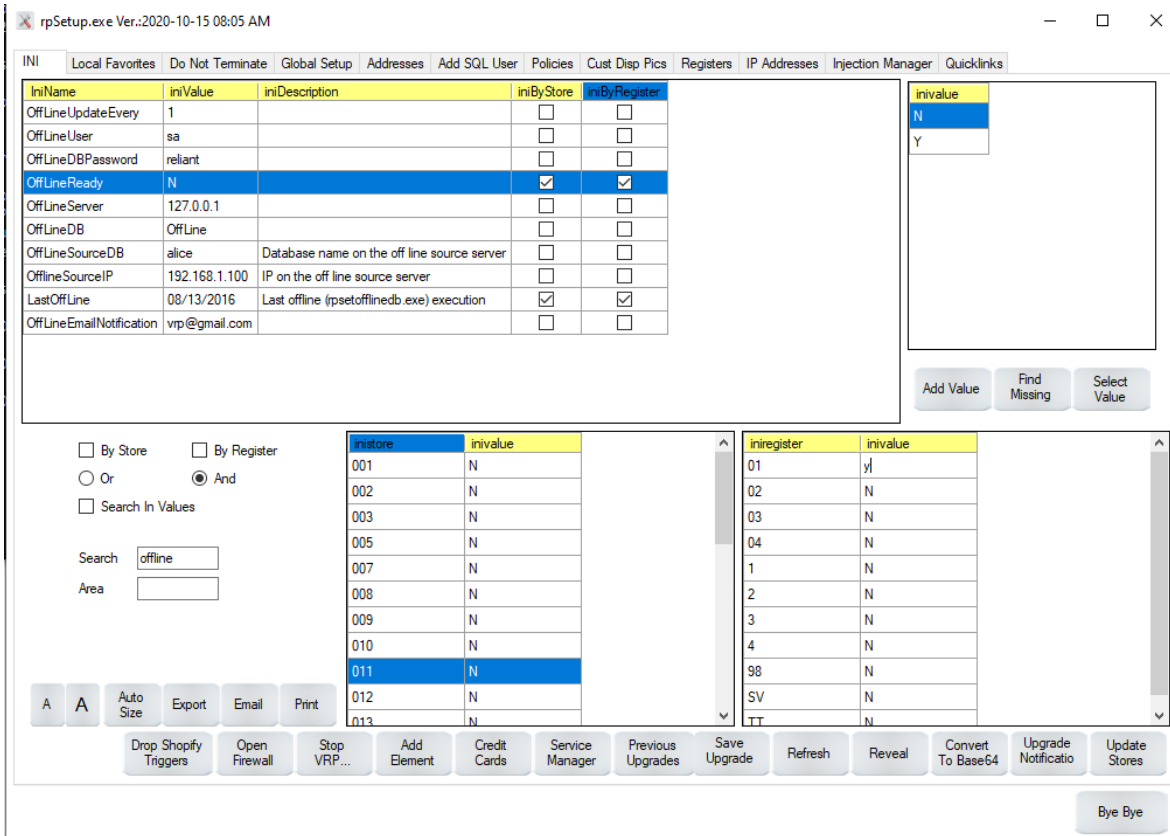


6. In the search bar, enter offline to get to the following list of settings.



7. Select OffLineReady setup below that is highlighted below, click check the iniByStore and iniByRegister check boxes. In the bottom half of the window, select the store number in the left table and then choose the desired register and change the iniValue to y.

Note: Do not change the iniValue on the left table, only change the iniValue on the right table (for the desired register).



8. Change the offline server value to the value of the current register Ipv4 address of the designated backup server.

OffLineReady	N	<input checked="" type="checkbox"/>	<input checked="" type="checkbox"/>
OffLineServer	.221\sqlexpress	<input type="checkbox"/>	<input type="checkbox"/>
OffLineDB	OffLine	<input type="checkbox"/>	<input type="checkbox"/>

9. Rename the DB appropriately.

OffLineUpdateEvery	1	Update interval in days of Off Line DB	<input type="checkbox"/>	<input type="checkbox"/>
OffLineDB	VRP	Off Line DB Name	<input type="checkbox"/>	<input type="checkbox"/>
OffLineUser	sa	Off Line SQL User	<input type="checkbox"/>	<input type="checkbox"/>

10. Change the OffLineSourceDb value to the name of the database in the main working server. You could find the name of the source database from using rpSwitch module. Click start and type `c:\pos\rpSwitch` and hit <enter> to open rpSwitch.

OffLineDB	teico		<input type="checkbox"/>	<input type="checkbox"/>
OffLineSourceDB	vrp	Database name on the off line source server	<input type="checkbox"/>	<input type="checkbox"/>
OfflineSourceIP	192.168.1.100	IP on the off line source server	<input type="checkbox"/>	<input type="checkbox"/>

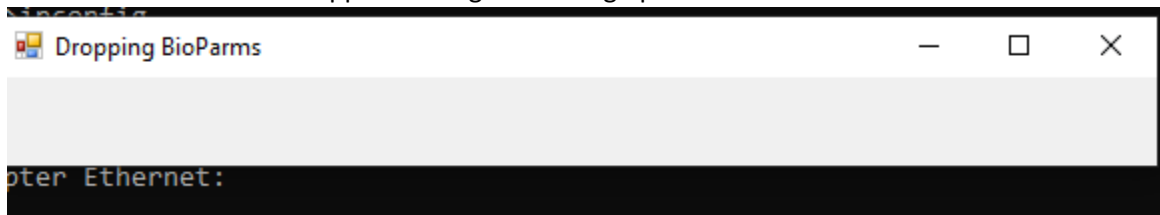
- The rest of the columns could remain unchanged. You could remove the OffLineEmail Notification value to avoid getting emails for testing.

OfflineSourceIP	192.168.1.100	IP on the off line source server	<input type="checkbox"/>	<input type="checkbox"/>
LastOffLine	08/13/2016	Last offline (rpsetofflinedb.exe) execution	<input checked="" type="checkbox"/>	<input checked="" type="checkbox"/>
OffLineEmailNotification			<input type="checkbox"/>	<input type="checkbox"/>

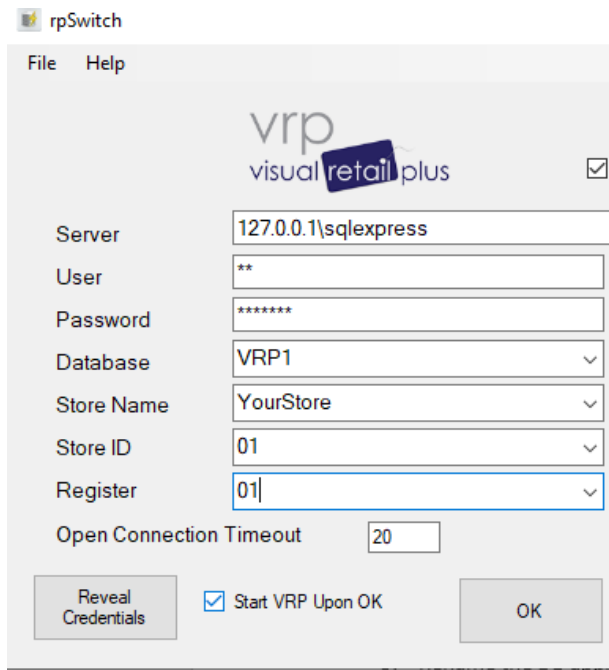
- Then close the setup and VRP applications. In command prompt, type the following command to set up the database in the register computer. Alternatively, you could click on start, type `c:\pos\rpSetOffLineDB.exe` and hit <enter>.

```
C:\POS>rpSetOffLineDB.exe
```

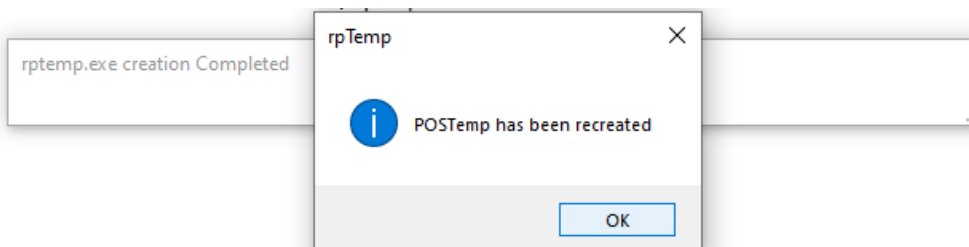
- The small window should appear during the setting up of the database.



- Click start and type `c:\pos\rpSwitch` and hit <enter> to open rpSwitch.
- We want to switch to the backup server in the register that we just created. The server name is the Ipv4 of the designated backup server. Enter the username and password and select the database name based on your inputs in the Setup Module of the VRP application.



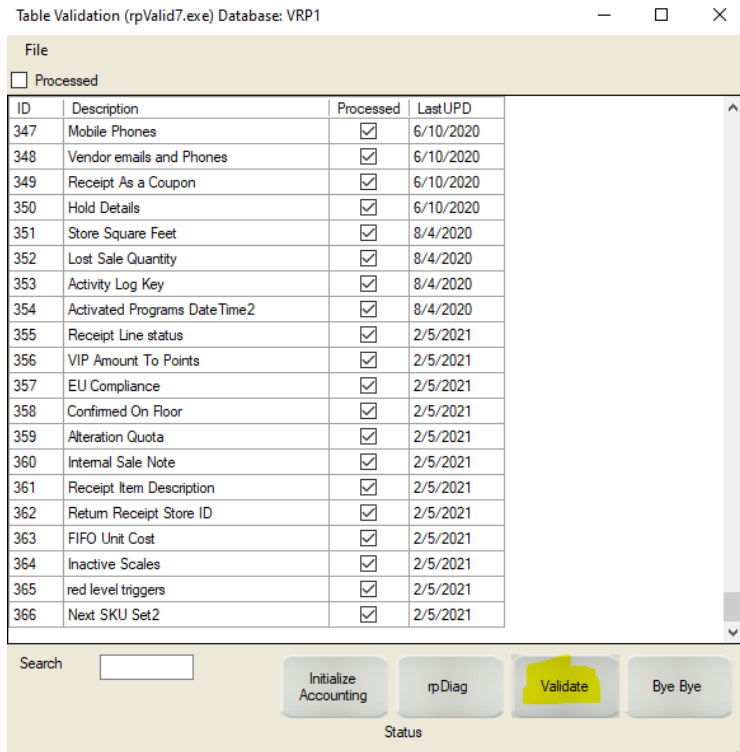
16. After successful completion, this message box will appear in the screen.



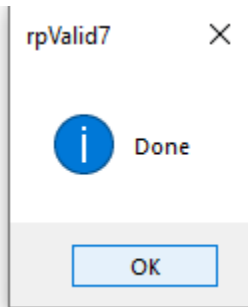
17. In command prompt, enter the following command to start the table validation module.
Alternatively, you could click on Start, type **c:\pos\rpValid7.exe** and hit <enter>.

```
C:\POS>rpValid7.exe
```

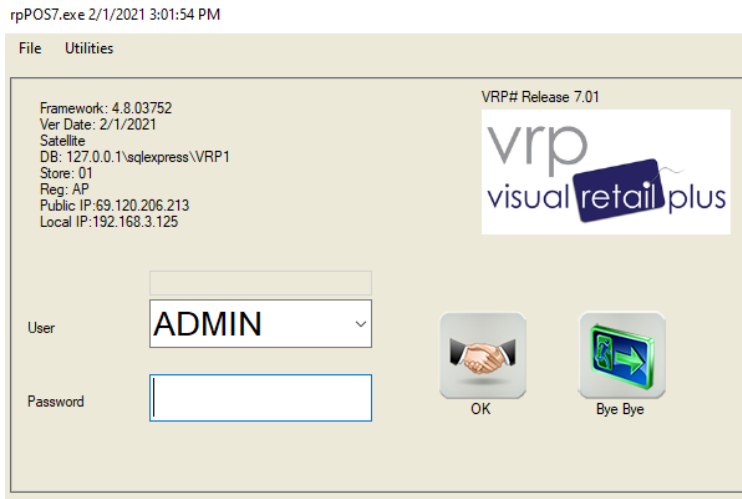
18. Verify the store id and click on OK. Then, click on Validate Button to start validation.



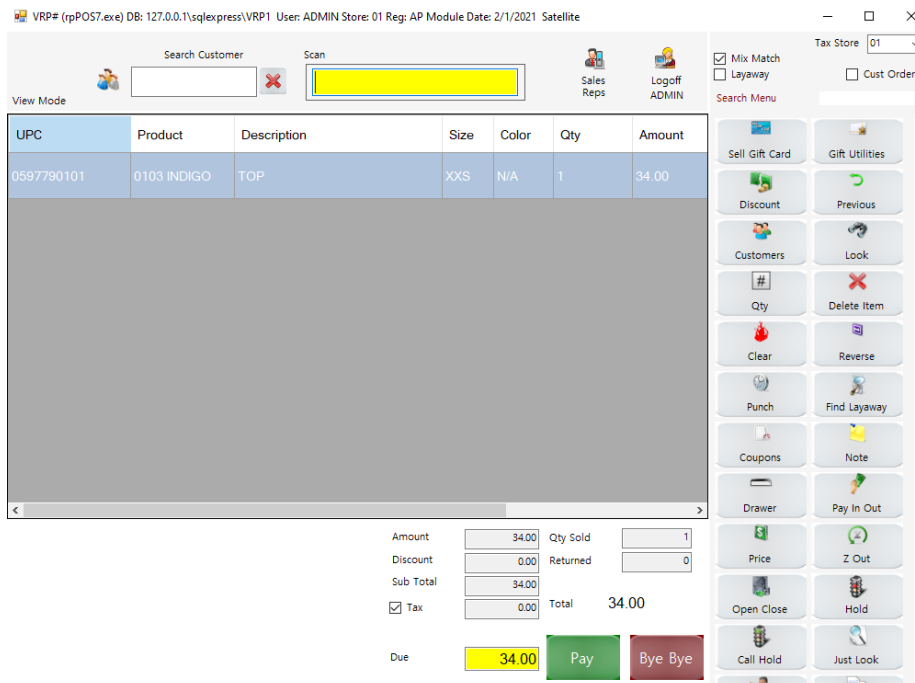
19. The following message box will appear after successful connection.



20. Now open the VRP application and login using any user.



21. Make sure the POS module and other modules are working correctly. The backup server has now been configured. Notice the DB value in the title bar of the window has the register IPv4 value.



22. Finally, we need to switch back to the main working server. Click start and type `c:\pos\rpSwitch` and hit <enter> to open rpSwitch.

23. Find the details of the main server in the table on the right side of the window (Previously Used Settings). Double-click on the setting to load it and click on OK.

Previously Used Settings On This Computer

Server	User	Database	Store Name	StoreID	Register
127.0.0.1\sqlexpr...	sa	VRP1	Abhash	01	AP
127.0.0.1\sqlexpr...	sa	VRP1	VRP	01	AP
127.0.0.1\sqlexpr...	sa	VRP1	VRP	01	01
127.0.0.1\sqlexpr...	sa	VRP	VRP	01	01

Search

Select Settings Delete... Bye Bye